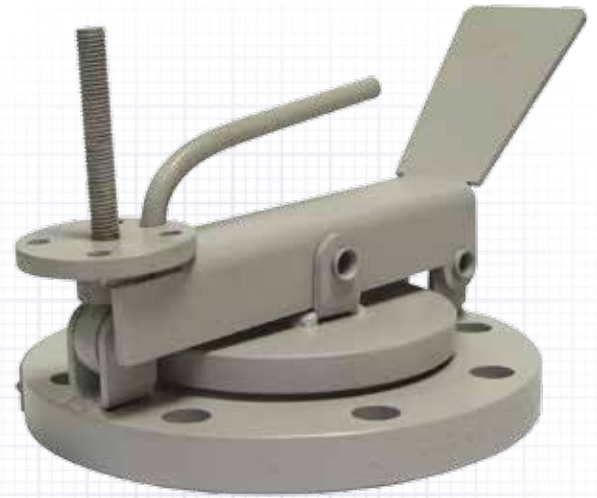


Gauge Hatches

Storage Tank Gauge Hatches

for Level Measurement and Sampling

The Elmac Technologies range of gauge hatches allow easy access to atmospheric liquid storage tanks for manual level measurement and sampling.



Principle of operation

Provides tank access where manual level gauging, temperature measurement or sampling is required. The safety pedal allows the operator to open the gauge hatch whilst remaining 'hands free' to carry out required measuring. An optional lockable version is also available.

Materials and options

Model	Options
Sizes (Nominal Bore)	4" 6" 8" 10" 12"
Process Connection	ANSI 150# (Standard) PN10 / PN16 Special (on request)
Materials	Aluminium Cast Iron Carbon Steel Stainless Steel
Insert	Nitrile Rubber PTFE
Pressure Setting	≤ 2.5psig (lockable version)

Features and benefits

Robust construction to deal with regular use

Sizes and materials to suit a range of applications

Non-sparking feature, provided by the use of a PTFE or Nitrile rubber insert

The cover is designed with a condensation rim. This encourages liquid drainage from the surface to reduce the possibility of freezing.

Version with lockable handle and gas tight seal up to 2.5psig

Elmac expertise

Elmac have been manufacturing protection equipment since 1948, and bring enhanced levels of flame and explosion protection to a diverse range of applications.

Elmac offers considerable technical leadership and using test facilities along with CFD capabilities, employs research teams renowned for developing solutions for the most challenging of industrial applications.

Customer Support

Tel: +44 (0) 1352 717600

Email: sales@elmactech.com

Fax: +44 (0) 1352 717642

Greenfield, Flintshire, United Kingdom CH8 9DP

All specifications are correct at time of print, are for guidance purposes only and subject to change without prior notice.

Issue No. 03 (02/17)



www.elmactechnologies.com